

NETMAP: Get Started

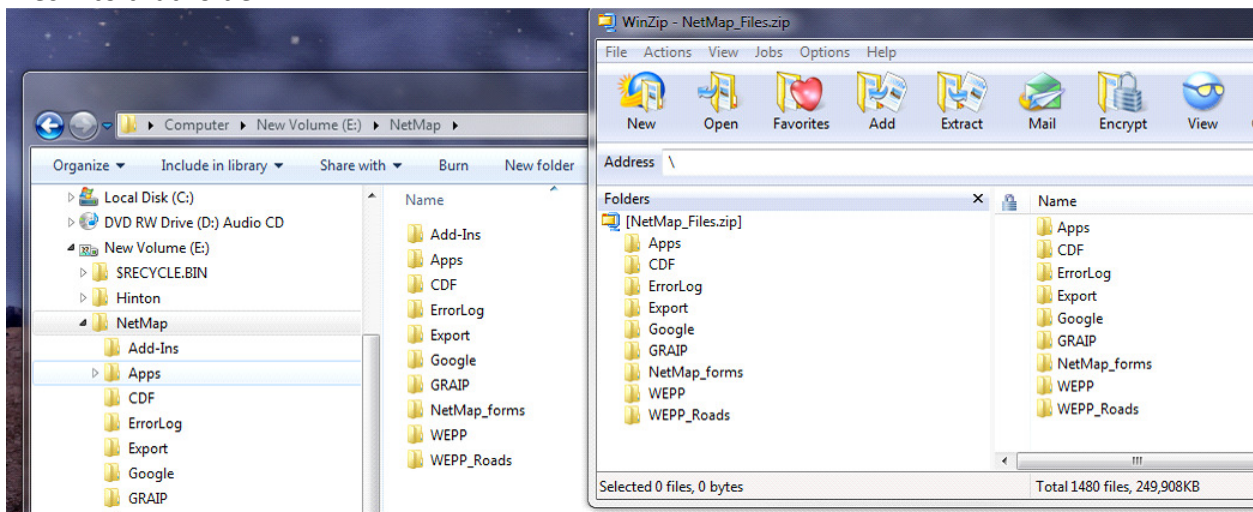
Welcome to NetMap! NetMap's digital landscapes and analysis tools allow users to better understand their watersheds and the relationships between land uses and the natural environment. NetMap is a decision support tool providing critical information to address a host of geospatial applications involving climate change, grazing, forestry, urbanization, production of drinking water, transportation, energy development, restoration and conservation.

NetMap consists of: i) six Add-Ins (ArcMap 10/10.1), ii) NetMap_files (support programs), iii) digital watershed databases (individual watersheds approximately 500,000 acres [2000 km²]), and iv) online Technical Help (<http://www.netmaptools.org/Pages/NetMapHelp/netmap.htm>).

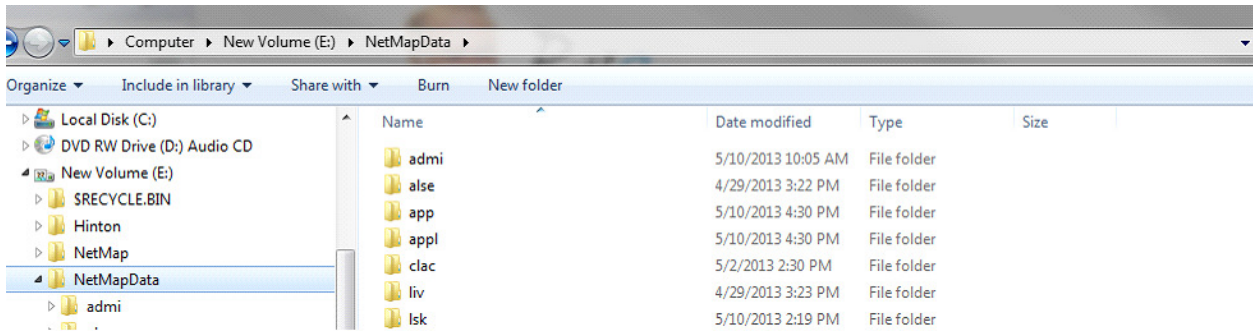
Follow the instructions below to get NetMap started on your computer (you will need one or more NetMap datasets, approximately 1-4 GB each). Requirements include a 64 bit computer, Windows 7, and sufficient memory (>= 4 GB, more is better). ESRI ArcMap 10/10.1 is required.

If you have questions, please contact www.netmaptools.org for assistance; we are here to help.

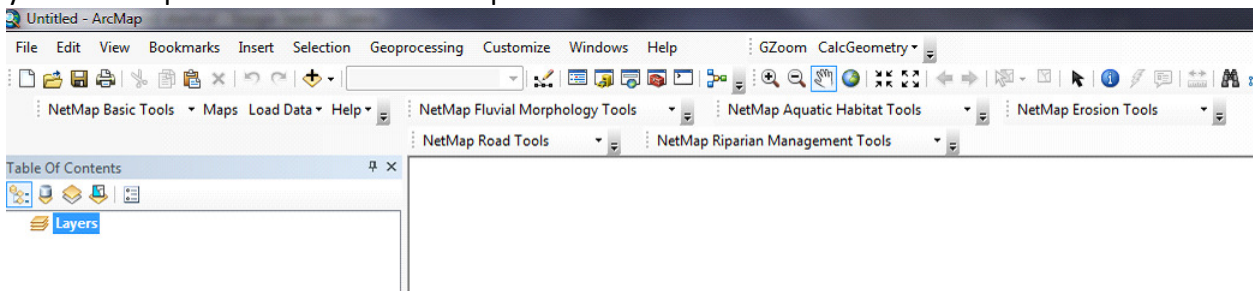
Step 1: Open NetMap_Files.zip. Create a folder on a local hard drive, and move the zipped files into that folder.



Step 2: Create a folder where you will store your NetMap datasets. Copy the dataset folder(s) into that directory. If you are using the demonstration watershed, the data name is "trn". Place that watershed into your data folder.

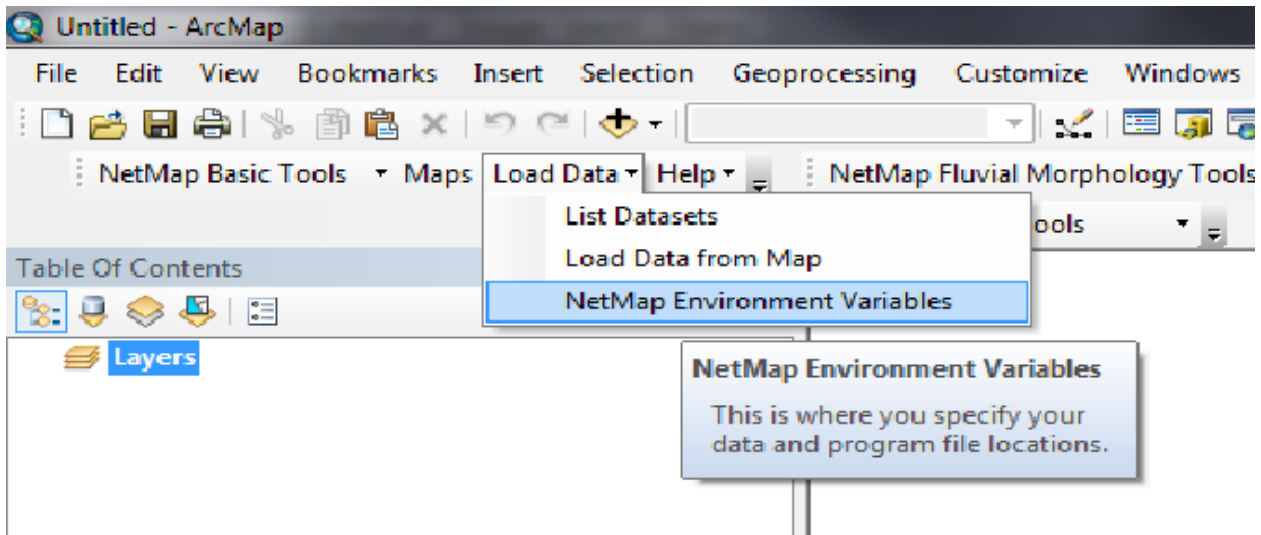


Step 3: Install the NetMap add-ins. Double-click each add-in to install. Open ArcMap, and your NetMap toolbars should show up:

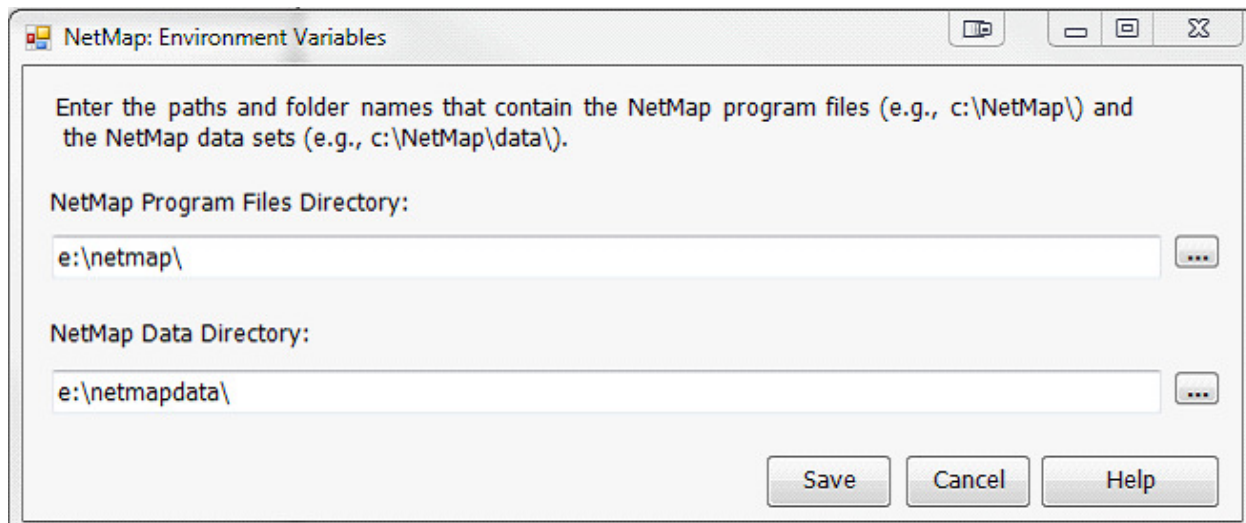


If the toolbars do not show up, right-click on the ArcMap toolbar area and check the NetMap Add-in boxes. Also, all tool bars may sit on top of one another, thus obscuring all but the top one. Just move the add-ins around and place them into the tool bar for easy access. If any of the add-ins appear truncated (particularly possible in the wider Basic Tool Module), use the small arrow on the interface to expand it horizontally.

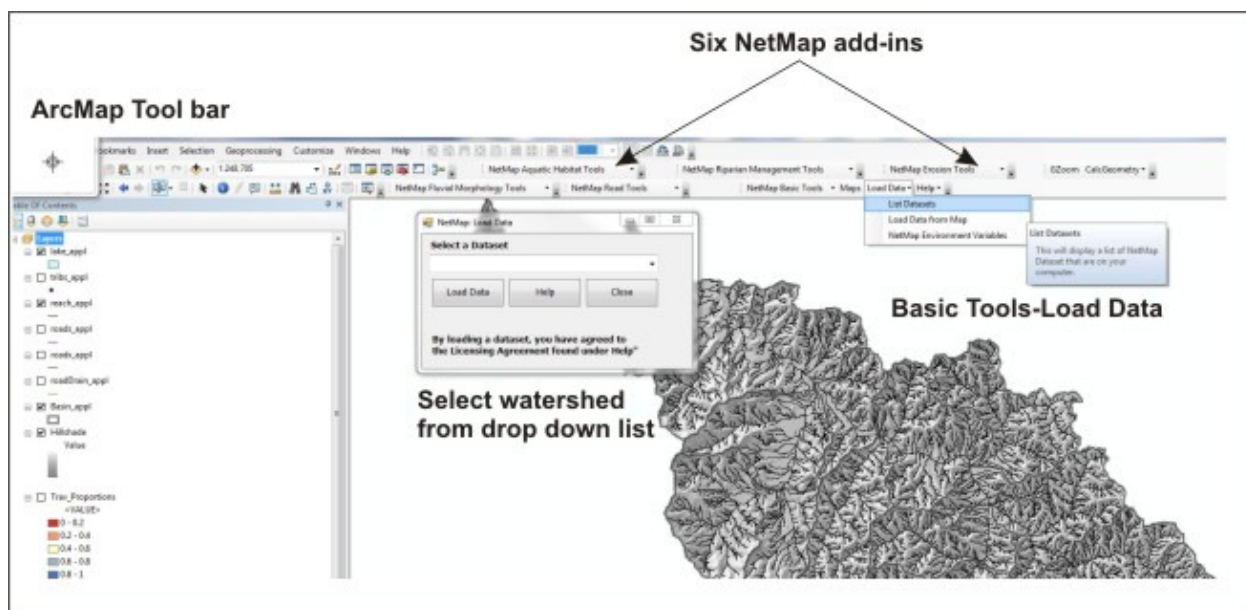
Step 4: Find the NetMap Basic toolbar, and click Load Data, and then NetMap Environment Variables:



Enter, or browse to, the folders where you stored your NetMap Files and datasets:



Step 5: Load your watershed



NetMap is now ready to go. Using “Load Data” in the Basic Tool Add-in, you can load a dataset and begin NetMapping. Refer to the “Help” tab in the Basic Tools to access NetMap’s online technical help. In addition, all tools and attributes in the map generator contain links to specific help topics.

We are here to help! The NetMap team.